



(778) 548-3847
INFO@FVISS.CA
WWW.FVISS.CA

April 30, 2024

ANNUAL SUMMARY REPORT

2023

Prepared by:
Kathy Ma Green (Executive Director)



ABOUT US

The Fraser Valley Invasive Species Society (FVISS) is a non-profit society committed to reducing the negative impacts caused by invasive species. We are one of a network of regional invasive species councils throughout the province and work closely with these other councils and the Invasive Species Council of BC.

The Fraser Valley Invasive Species Society is dedicated to taking action to reduce the impacts of invasive species in the Fraser Valley through education, coordination, and on-the-ground operations.



FVISS 2023

Goals and Objectives

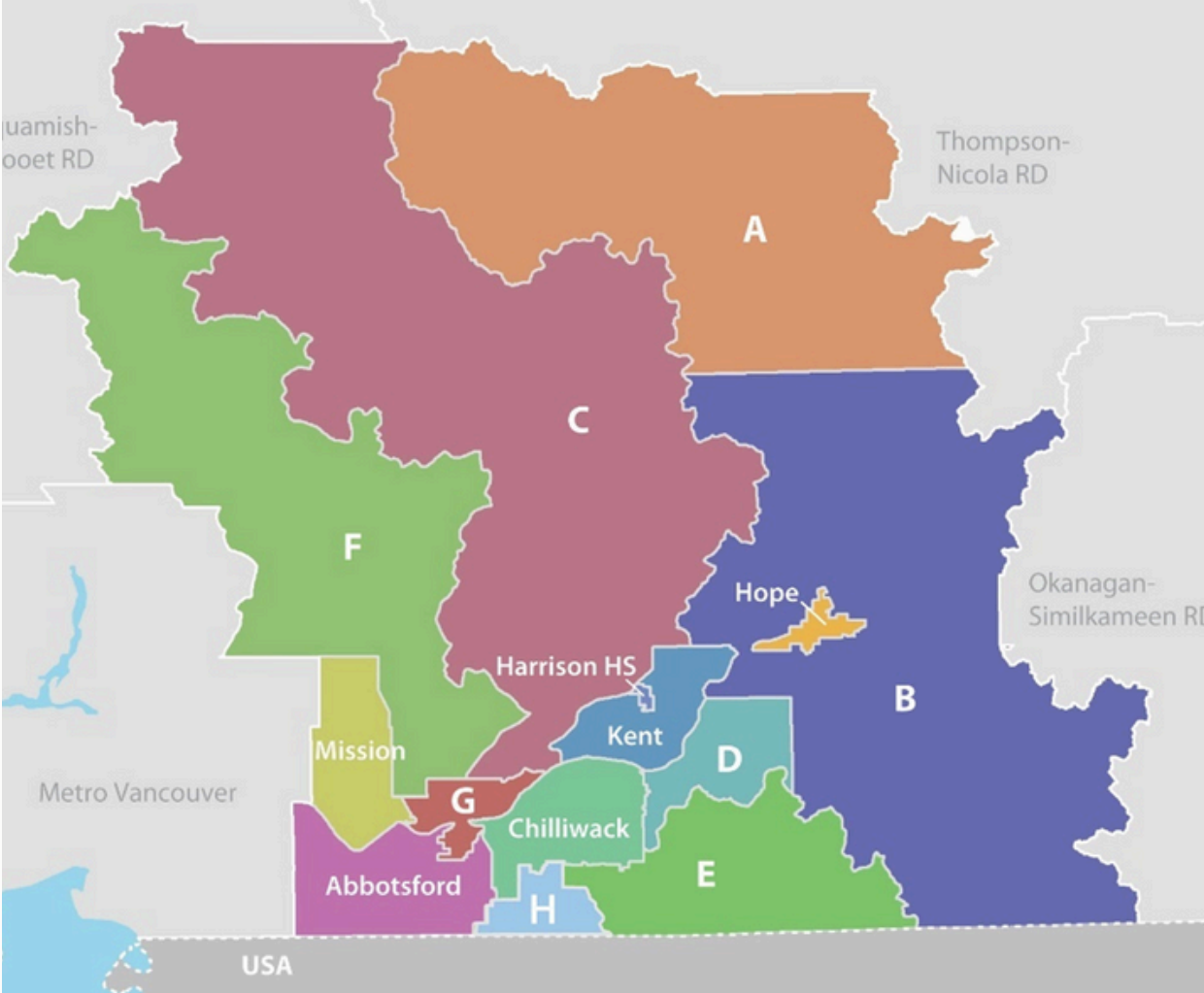
The goals of FVISS are for the organization to:

- Be a recognized leader on invasive species in the Fraser Valley;
- Facilitate collaboration between land managers that results in less land infested with invasive species in the Fraser Valley;
- Increase involvement by Fraser Valley residents and businesses in invasive species prevention and action; and
- Be a well-functioning, resilient organization

PROJECT AREA

The FVISS operates within the boundaries of the Fraser Valley Regional District, which includes six municipalities (City of Abbotsford, City of Chilliwack, City of Mission, District of Hope, District of Agassiz-Kent, and Village of Harrison Hot Springs) as well as eight electoral areas (A, B, C, D, E, F, G, and H).

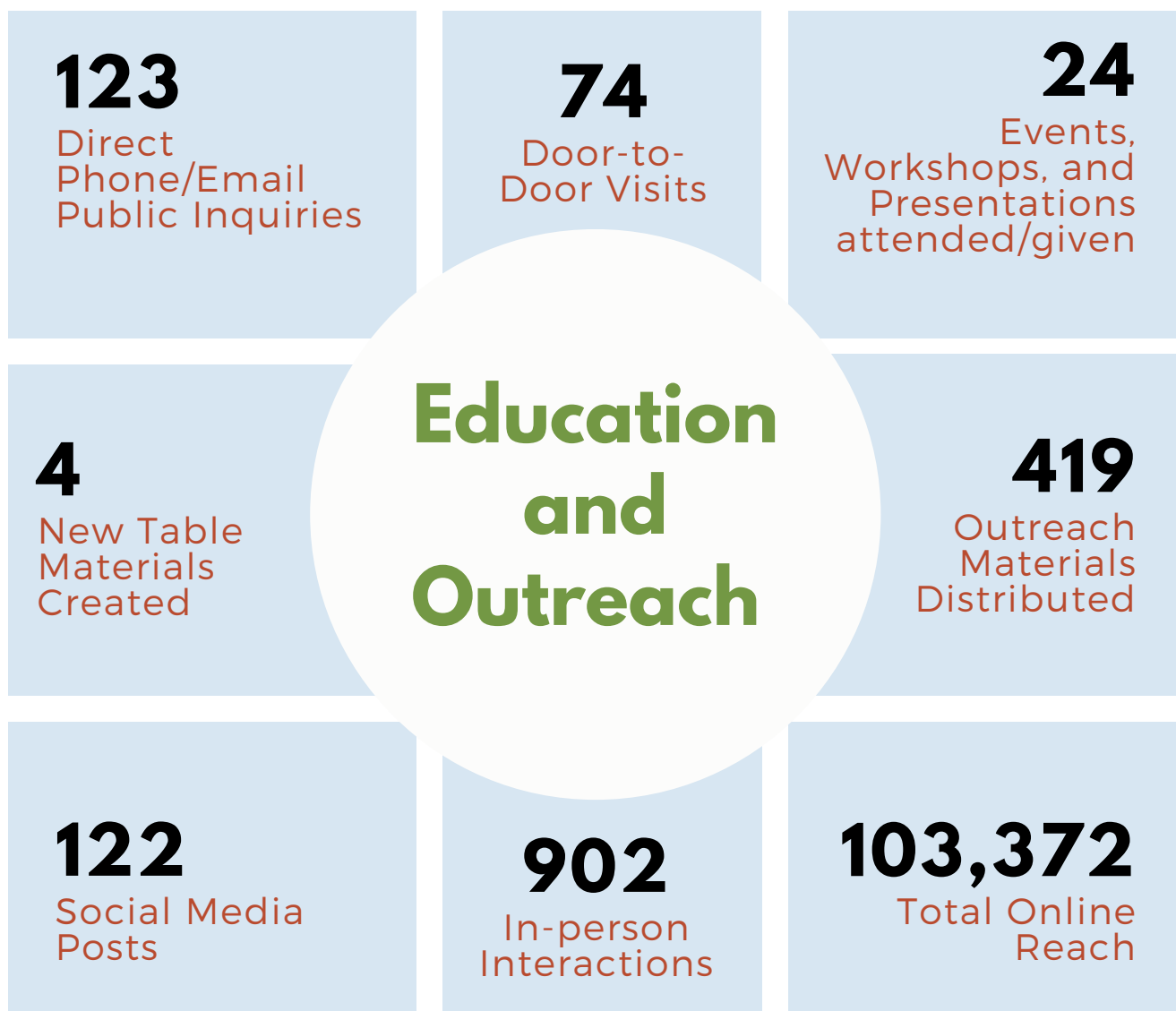
The Fraser Valley Invasive Species Society is grateful to live, work, and play on the traditional, ancestral and unceded territory of the Stó:lō Coast Salish peoples. We hope our work towards managing invasive species will contribute to the ongoing stewardship of the land, which the Stó:lō have been doing here since time immemorial.



Fraser Valley Regional District

COORDINATION AND AWARENESS

In 2023, the Fraser Valley Invasive Species Society raised public awareness of invasive flora and fauna species. This included providing information about invasive species, their impacts, and how invasive species can be managed. The FVISS also worked to raise awareness around efforts that residents of the Fraser Valley can do to limit the spread of and the impacts of invasive species throughout the region.





Events, Workshops and Presentations

This year, the FVISS attended and/or presented at a total of 24 outreach educational events, workshops and presentations! This included a Pesticide Applicator Course, Yellow-Flag Iris Benthic Barrier Workshop, roadside crew training, and stewardship volunteer workshops!

15 TABLE DISPLAYS **6 WORKSHOPS COURSES** **3 PRESENTATIONS**

With the support of the FVISS Outreach Coordinator, the FVISS table and outreach items were able to speak with visitors at a range of public events. We also distributed educational promotional materials, behaviour change programs and FVISS swag (pencils, stickers and colouring sheets).

New table display materials were also created!

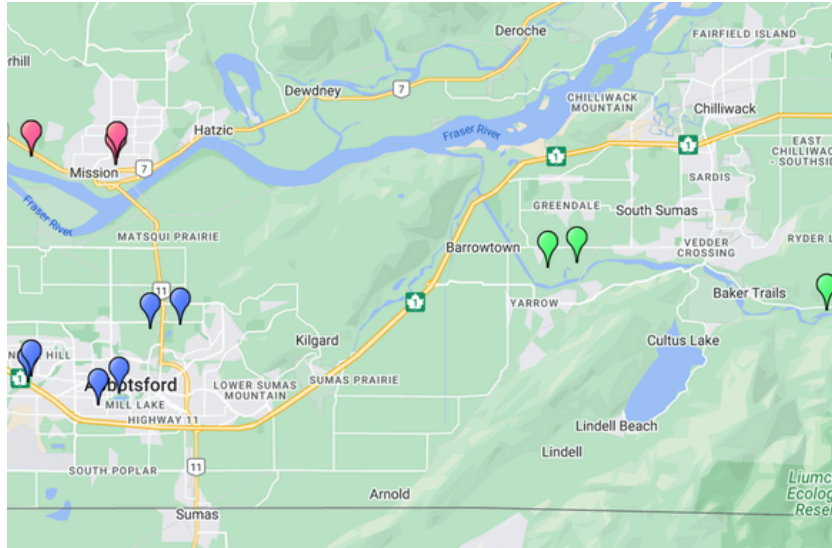
- **Laminated flowering invasive plants** are less fragile than herbarium collections, and showcases the distinctive colours of several invasive plants
- **Invasive plant seed collection** helps us showcase dispersal and how plants can easily spread and hitchhike
- **New games and activities** (Guess the invasive)
- **A prize wheel** lets visitors win an invasive species sticker or floating keychain!



MUNZEE Scavenger Hunt

New for this year - the FVISS introduced the MUNZEE QR code Scavenger Hunt to highlight different invasive species around the Fraser Valley - all you need is your phone's camera to play!

QR codes were placed at 13 different locations: Abbotsford (6), Chilliwack (4) and Mission (3). Get outside, take a walk, and go find them today!



Website and Social Media

	Website	Facebook	Instagram
# followers/subscribers	201	785	905
# posts	1	70	52
Total reach	44,023	58,545	7,614

We are always adding resources to our website. New for 2023 included Invasive Plant Look-alike guides:

- Giant Hogweed vs Commonly Mistaken Plants in the Fraser Valley
- Yellow Flag Iris vs Cattail/Bullrush

PLANT LOOK-ALIKES

Giant Hogweed and Commonly Mistaken Plants in the Fraser Valley



Updated: November 2023

HEIGHT	GIANT HOGWEED <i>Heracleum mantegazzianum</i> INVASIVE, TOXIC	COW PARSNIP <i>Heracleum maximum</i> NATIVE	POISON HEMLOCK <i>Conium maculatum</i> INVASIVE, TOXIC	WILD CHERVIL <i>Anthriscus sylvestris</i> INVASIVE	WATER HEMLOCK <i>Cicuta maculata</i> NATIVE, TOXIC	QUEEN ANNE'S LACE <i>Daucus carota</i> INVASIVE
 <ul style="list-style-type: none"> • Very Tall! Up to 5 m • Flowers late June/July • Toxic sap can cause burns, blisters, and scarring. All plant parts are toxic 	<ul style="list-style-type: none"> • Can grow to 2 m • Flowers early June • Can cause skin irritation 	<ul style="list-style-type: none"> • Can grow up to 1.8 m • Flowers April/May • Toxic sap can cause burns, blisters, and scarring. All plant parts are toxic 	<ul style="list-style-type: none"> • Grows up to 1.5 m tall • Flowers April/May 	<ul style="list-style-type: none"> • Grows approx. 1 m tall • Flowers late June/July • Roots are thickened, tuberous and bulbous • Toxic sap can cause burns, blisters, and scarring. All plant parts are toxic 	<ul style="list-style-type: none"> • Grows approx. 1 m tall • Flowers August/September • Can cause skin irritation 	
LEAVES	<ul style="list-style-type: none">• Deeply serrated leaf edges• Leaves can be up to 1 m wide• Stiff hairs on undersides	<ul style="list-style-type: none">• Shape is similar to a maple leaves• Covered in soft hairs	<ul style="list-style-type: none">• Triangular shaped fern-like leaves• Covered in soft hairs	<ul style="list-style-type: none">• Triangular shaped fern-like leaves• Covered in soft hairs	<ul style="list-style-type: none">• Separated leaflets• Stiff hairs on undersides of leaves	<ul style="list-style-type: none">• Triangular shaped fern-like leaves• Covered in soft hairs
STEMS	<ul style="list-style-type: none">• Reddish or purple blotches along stems• Stiff white hairs	<ul style="list-style-type: none">• Green stem, less conspicuous reddish or purple spots• Fuzzy hairs on stem	<ul style="list-style-type: none">• Ribbed stems• Reddish or purple spots and blotches along stems	<ul style="list-style-type: none">• Ribbed stems• Green stem, sometimes with purple at joints	<ul style="list-style-type: none">• Green stem with reddish or purple lengthwise streaks• Stiff white hairs	<ul style="list-style-type: none">• Green ribbed stem• Fuzzy hairs on stem
FLOWERS	<ul style="list-style-type: none">• Large umbrella-shaped white flower cluster• Flowerheads can be up to approx. 1.5 m across	<ul style="list-style-type: none">• Rounded white flower• Flowerheads can be up to approx. 0.5 m across	<ul style="list-style-type: none">• Rounded, umbrella-shaped white flower clusters	<ul style="list-style-type: none">• Rounded, umbrella-shaped white flower clusters	<ul style="list-style-type: none">• Rounded, generally globe-like white flower clusters	<ul style="list-style-type: none">• Dense white flower clusters with a flat top, back dot in the center of flowerhead• Bracts under the flowerhead

PLANT LOOK-A-LIKES

Yellow Flag Iris & Cattail (Bullrush)



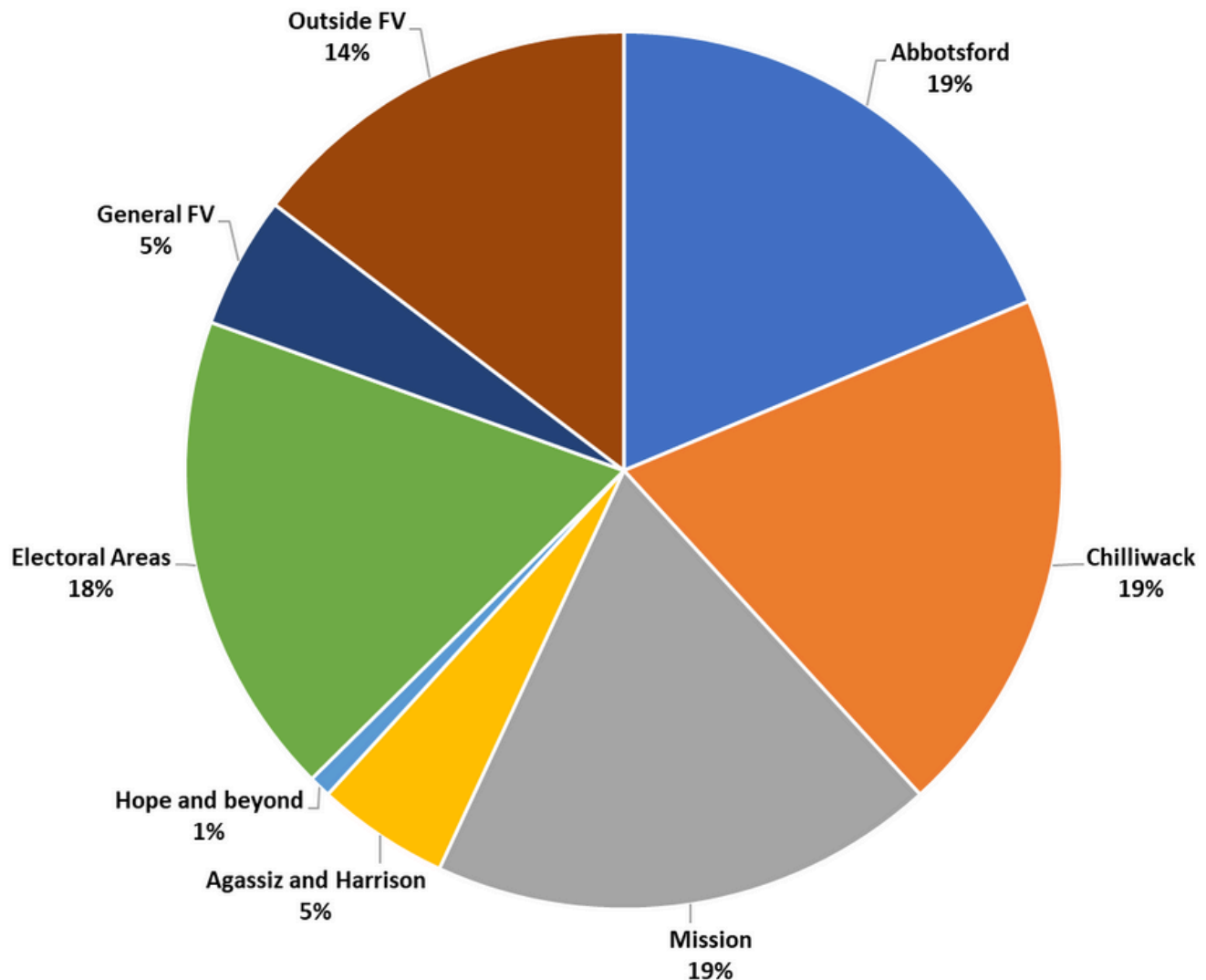
Updated: November 2023

	SHOOTS	LEAVES	CROSS SECTION	STEM	FLOWER
<p><i>Typha</i> spp.</p> <p>CATTAIL (BULLRUSH)</p> <p>NATIVE PLANT</p> <ul style="list-style-type: none"> • Can grow to 3 m tall 	<ul style="list-style-type: none">• No purple at the base of shoots	<ul style="list-style-type: none">• Cattail leaves do not fan out from the base	<ul style="list-style-type: none">• Leaves are D-shaped: Flat on one side and rounded on the other	<ul style="list-style-type: none">• Stems are round and have a honeycomb-like structure	<ul style="list-style-type: none">• Flowers are thick, brown, and cigar-shaped spikes
<p><i>Iris pseudacorus</i></p> <p>YELLOW FLAG IRIS</p> <p>INVASIVE PLANT TOXIC</p> <ul style="list-style-type: none"> • Can grow 1.5 m tall • Flowers in early June • Sap can cause skin irritations, do not consume this plant 	<ul style="list-style-type: none">• Shoots have purple coloring at the base	<ul style="list-style-type: none">• Iris leaves form a fan-shape at the base of the plant	<ul style="list-style-type: none">• Leaves are flat and have a ridge down the middle	<ul style="list-style-type: none">• Stems are almond-shaped, often with a purple hue	<ul style="list-style-type: none">• Flowers are yellow, with three upright and three drooping sepals/petals

Public Inquiries

FVISS received 123 calls from the general public in 2023.

- Most inquiries came from Abbotsford, Chilliwack and Mission



- The most common public inquiries were:
 - Reporting Invasive Plants
 - Invasive Plant Control Information
 - Invasive Plant Identification Help
 - Alternatives to Invasive Plants
 - Invasive Species Legislative Questions

ON THE GROUND WORK

Invasive Mussels Lake Monitoring

This is FVISS’s 6th year conducting lake monitoring for invasive zebra and quagga mussels. Again, **NO** adult invasive mussels were found on substrate samplers, and **NO** water samples tested positive for veligers!

8 SUBSTRATE SAMPLERS
INSTALLED

28 WATER SAMPLES
COLLECTED



5

LAKES MONITORED

- Cultus Lake,
- Silver Lake,
- Kawkawa Lake,
- Harrison Lake,
- Lower Fraser River (Island 22 Regional Park)

Funding for this work was provided by the BC Ministry of Environment and Climate Change, Fisheries and Oceans Canada and Habitat Conservation Trust Foundation.



Post-Flood Invasive Species Monitoring

The 2021 atmospheric river events caused significant damage to the Fraser Valley. One of the impacts was potential for invasive plant spread as a result of the flooding, landslides, and follow-up mitigation and maintenance work.

In 2023, the FVISS was able to support some of this work conducting post-flood site disturbance surveying and mapping:

- Surveyed 45 flood-disturbed sites for invasive species
- Mapped 5 flood-mitigated areas
- Created photo-plots for annual visits and monitoring



Invasive Plant Management

2,331

INVASIVE PLANT SITES SURVEYED

This includes roadsides, parks, even creeks!

998

SITES RECEIVED TREATMENT

181 Mechanical treatments

817 Chemical treatments

35.96

HECTARES OF AREA TREATED

19.44 ha Mechanically treated

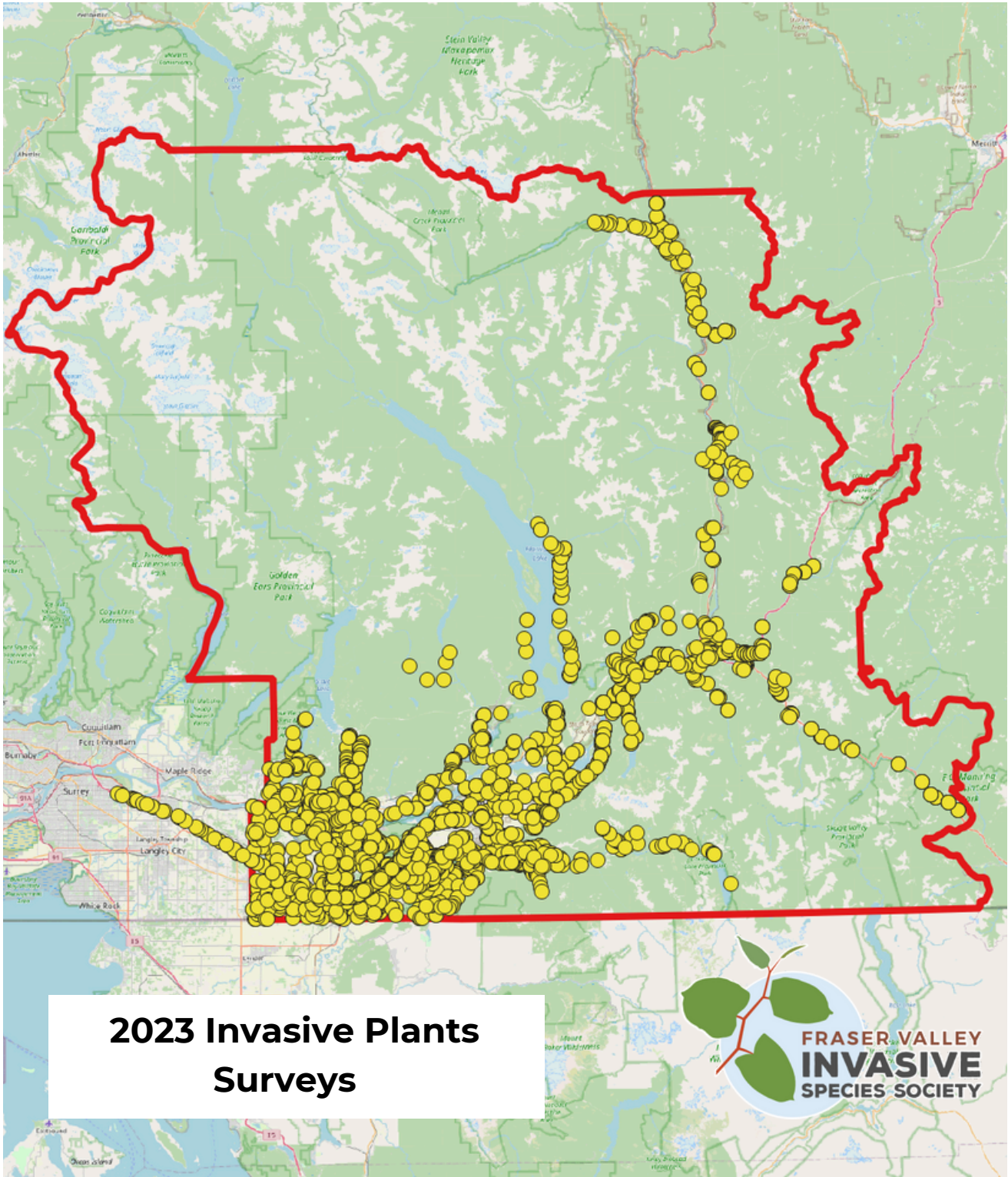
16.51 ha Chemically treated

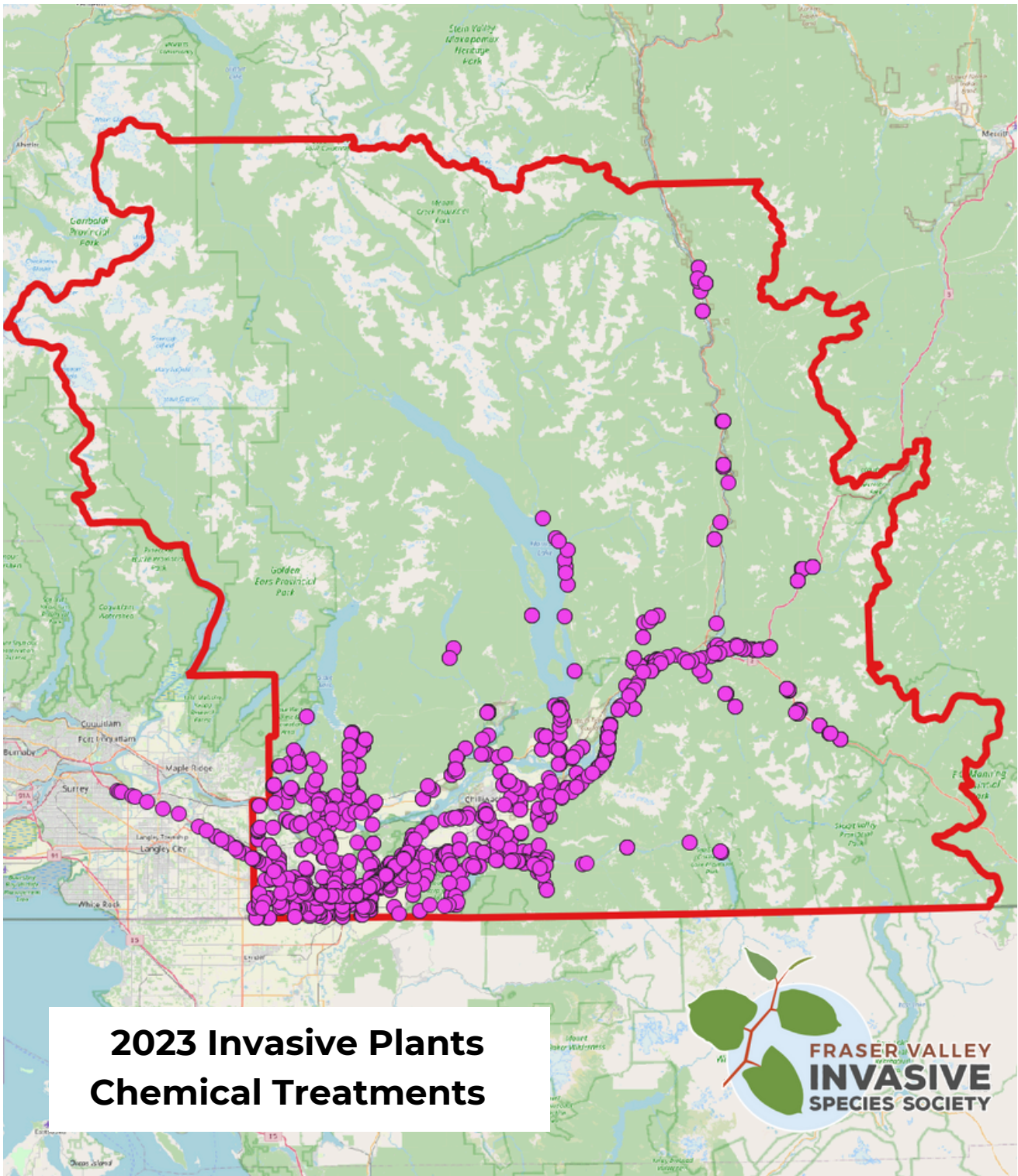
46

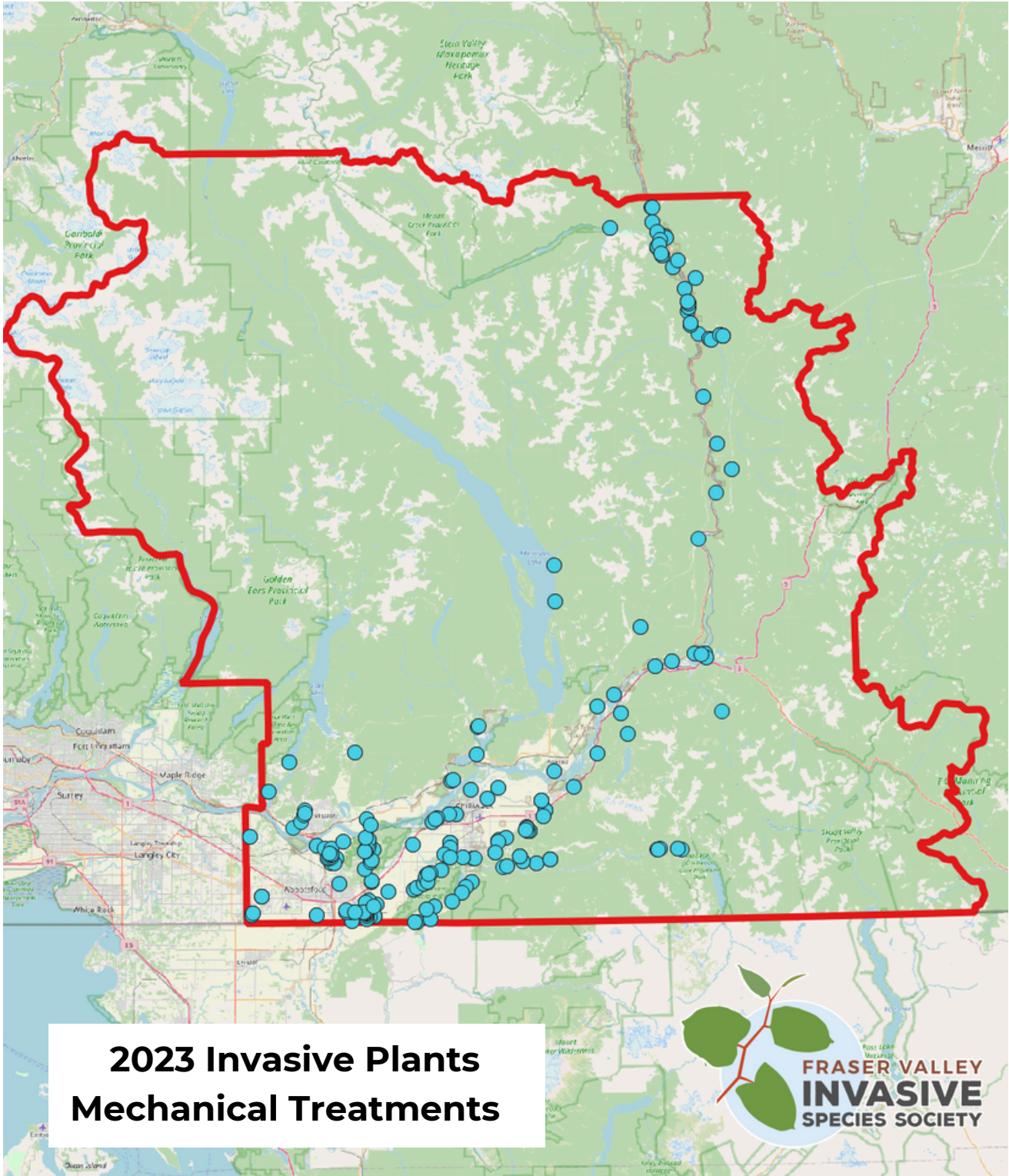
INVASIVE PLANT SPECIES TREATED

The top four invasive plant species were:
knotweeds, giant hogweed, wild chervil, and
tansy ragwort









Other Programs

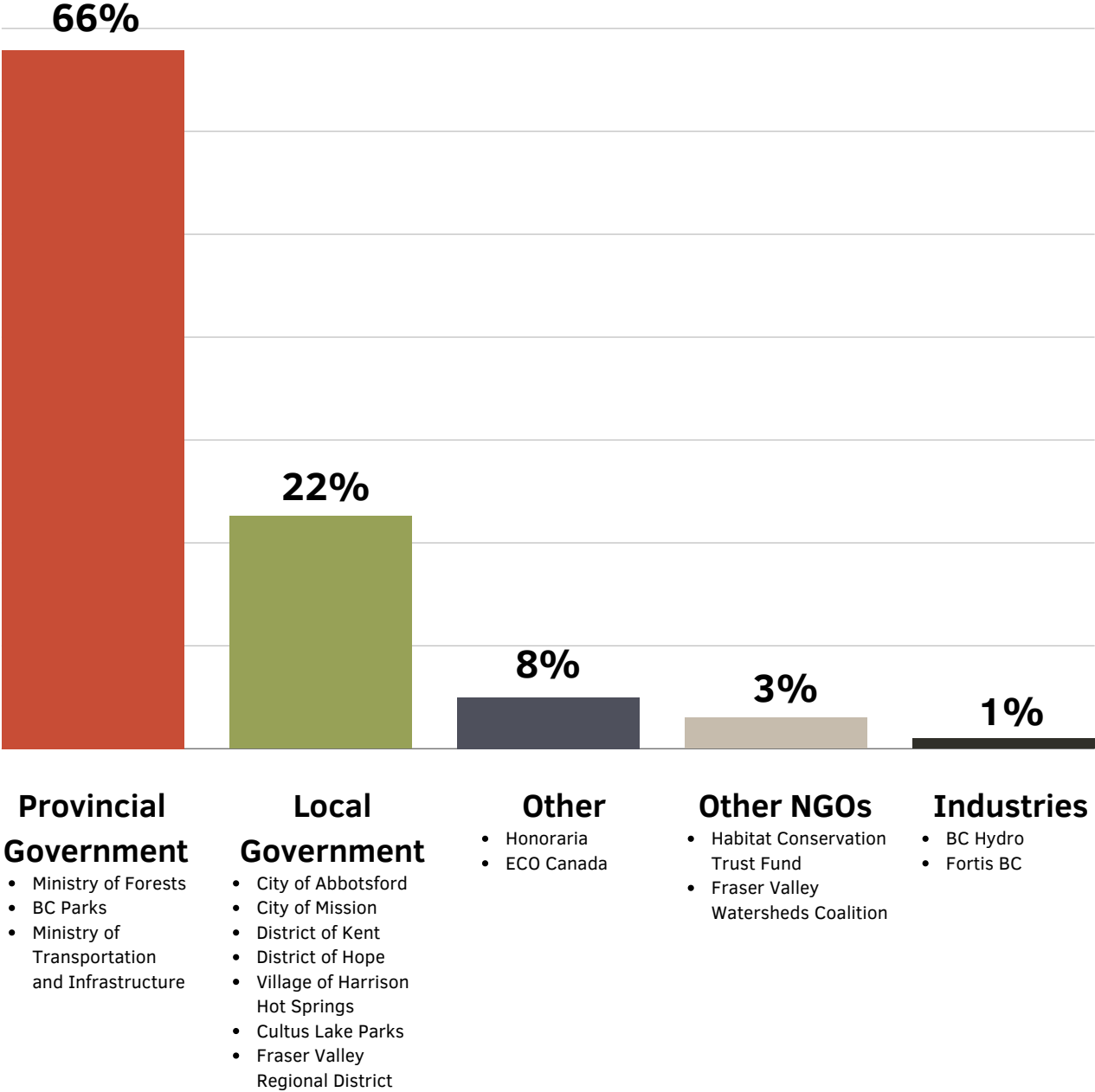
The FVISS is grateful to have been able to continue support the Fraser Valley Regional District's programs for invasive plants on private land.

Knotweed 50/50 Cost-share pilot program

- This program was open to residents of Abbotsford, Chilliwack, Electoral Areas C, D, E, G, and H.
- This program continued into its 2nd year, encouraging homeowners with knotweed on their property to complete treatment to manage this invasive plant.
- FVISS helped coordinate between the participants and contractors hired to conduct the treatments, as well as conducted targeted door-to-door outreach to 76 eligible addresses



2023 FUNDING PARTNERS



THANK YOU FOR SUPPORTING THE FVISS!

ALL PARTNERS



Ministry of
Transportation
and Infrastructure



Ministry of
Forests



ACKNOWLEDGEMENTS

The accomplishments of FVISS are only possible due to our dedicated staff and Board of Directors, our generous funding partners, fellow environmental non-profits in the valley, our expert contractors, and our hardworking volunteers. Thank you to everyone for your support!

BOARD OF DIRECTORS

- Chair - Victoria Brookes
- Treasurer - Nichole Marples
- Director - Ken Schwaerzle
- Director - Janne Perrin
- Director - Alida Janmaat
- Director - Steve Clegg
- Director - Terisha Bailey

FVISS STAFF

- Executive Director - Kathy Ma Green
- Outreach Coordinator - Michelle Lefebvre
- Field Technician (Summer) - Jalene Boucher
- Field Technician (Casual) - Roger Clark
- Data Technician (Casual) - Torin Kelly



Kathy Ma Green



Michelle Lefebvre



Jalene Boucher